

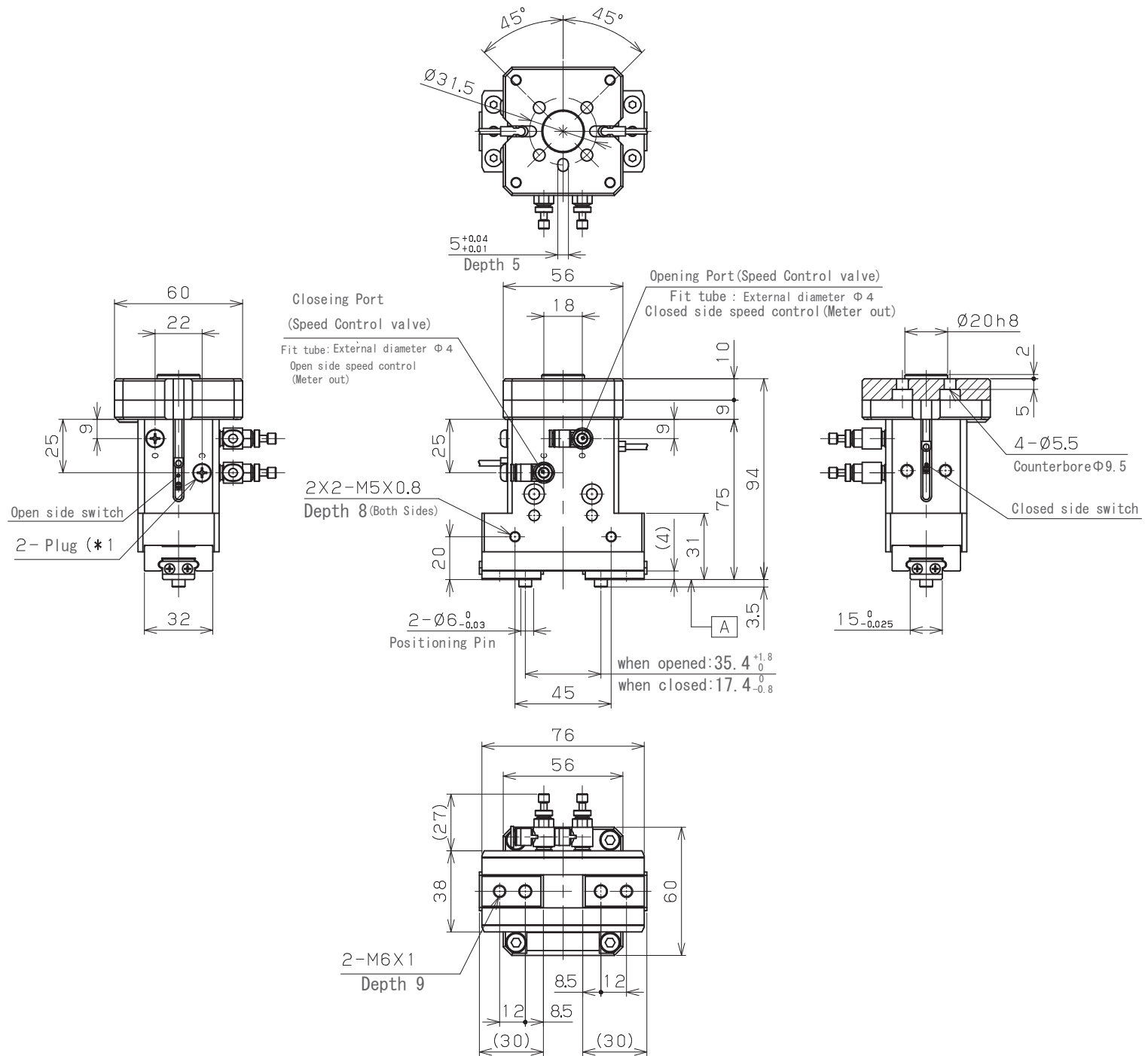
Specifications	
model	ARM-K-HP04R-25C
Robot	RS-003N, RS-005N/L RS-007N/L
Type	Air Gripper
Fluid	Air
Operating Pressure	0.1~0.7 MPa
Proof Pressure	1.05 MPa
Lubrication	Not Required
Operating Temperature	0~60 °C (Not Freezing)
Pipe Bore	Tube Outer diameter $\Phi 4$ With speed control valve
Applicable Switch	ZE Type
Product Mass	0.72 kg

Specifications	
model	HP04R-25C
Bore Size	$\Phi 25$
Action Type	Double Action
Opening/Closing Stroke	18 mm (*2)
Effective Gripping Force	Open: 103 N (P=0.5) Close: 82 N L=30mm
Maximum grip point	130 mm (From faceA) P=0.5MPa
Maximum Operating Cycle	150 c. p. m
Repeat Accuracy	$\pm 0.01$ mm

Specifications	
Type	ZE235B
Wiring Method	2wire System
Lead Wire Leading Direction	L-shaped
Load Voltage	DC10~28 V
Load Current	4~20 mA (25°C)
Internal Drop Voltage	4.5V max
Leak Current	1 mA max (DC24V·25°C)
Operation Indicator	Red LED indicator illuminates at ON
Lead Wire	PCCV0.15SQx2coresX3m

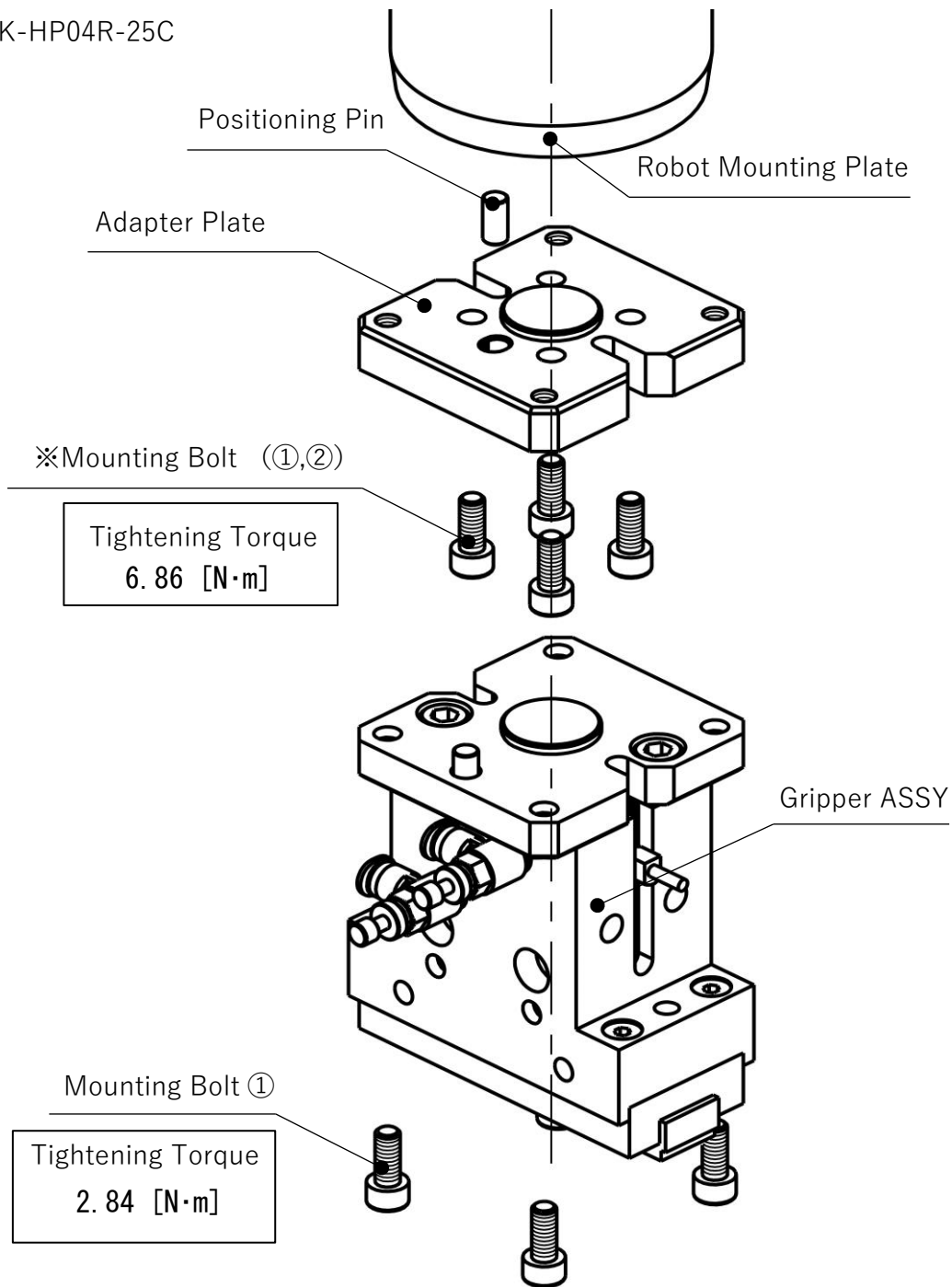
\* 1) Air Ports are provided on two sides.  
Please select and use.

\* 2) Please use with a stroke of 3 mm or more.



**【Mounting Method】**

ARM-K-HP04R-25C



Mounting Bolt		Remarks	Tightening Torque
①	M5X12L (Nickel Plating)	Mounting Gripper ASSY	2.84 [N·m]
		Screw Depth 8	6.86 [N·m]
②	M5X10L (Black Chromate)	※Screw Depth 7	6.86 [N·m]

reference)

Screw Depth 7	RS007N/L, RS013N/L etc
Screw Depth 8	RS003, RS005N/L etc