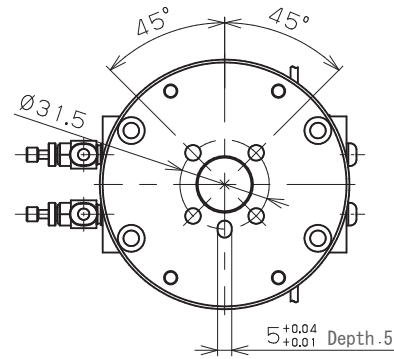


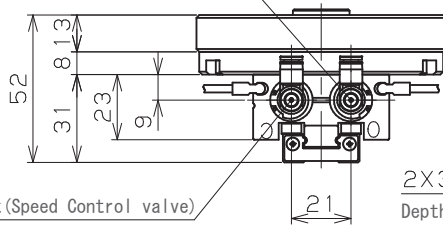
Specifications	
model	ARM-K-HP06-14-S
Robot	RS-003N, RS-005N/L RS-007N/L, duAro1/2
Type	Air Gripper
Fluid	Air
Operating Pressure	0.15 ~ 0.7 MPa
Proof Pressure	1.05 MPa
Lubrication	Not Required
Operating Temperature	0~60 °C (Not Freezing)
Pipe Bore	Tube Outer diameter Φ 4 With speed control valve
Applicable Switch	ZE Type
Product Mass	0.8 kg

Specifications	
model	HP06-14-S
Bore Size	Φ 14 X 2
Action Type	Double Action
Opening/Closing Stroke	30 mm (*2)
Effective Gripping Force	Open / Close (P=0.5) 58.8 N L=30mm
Maximum grip point	80 mm P=0.5MPa
Maximum Operating Cycle	100 c. p. m
Repeat Accuracy	\pm 0.07 mm
Option	No code: No stroke adjustment
	JA: Opening direction adjustment
	JB: Closing direction adjustment
	JC: Opening/Closing direction adjustment

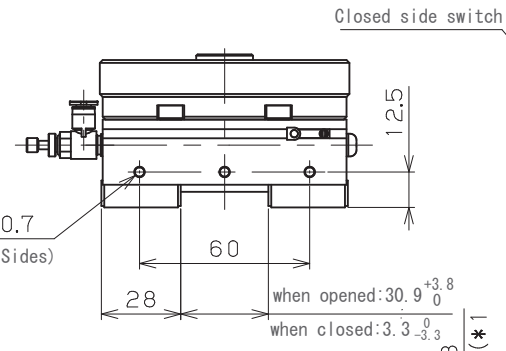
Specifications	
Type	ZE235B
Wiring Method	2wire System
Lead Wire Leading Direction	L-shaped
Load Voltage	DC10~28 V
Load Current	4~20 mA (25°C)
Internal Drop Voltage	4.5V max
Leak Current	1 mA max (DC24V•25°C)
Operation Indicator	Red LED indicator illuminates at ON
Lead Wire	PCCV0.15SQx2coresx3m



Opening Port (Speed Control valve)
Fit tube: External diameter Φ 4
Closed side speed control (Meter out)

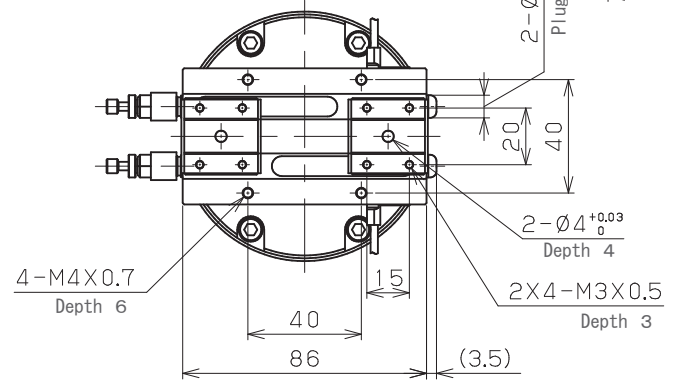
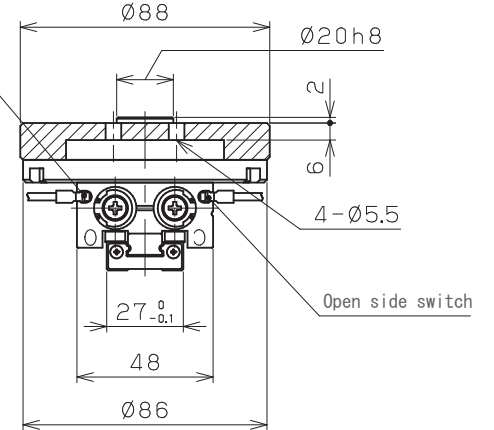


Closing Port (Speed Control valve)
Fit tube: External diameter Φ 4
Open side speed control (Meter out)



2X3-M4X0.7
Depth 6 (Both Sides)

when opened: $30.9^{+3.8}_0$
when closed: $3.3^{+0.0}_-3.3$



4-M4X0.7
Depth 6

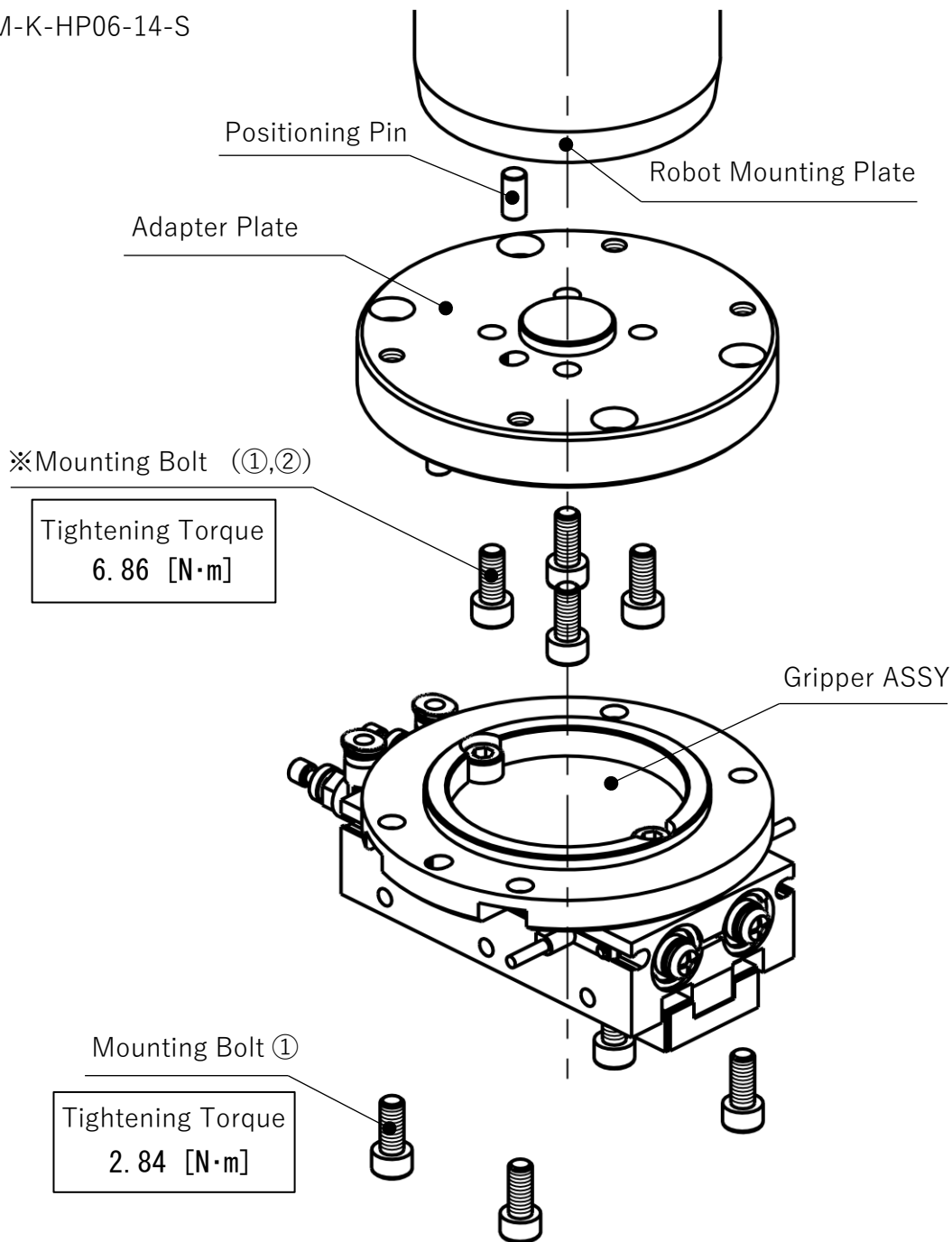
2- Φ 4 $^{+0.03}_0$
Depth 4

2X4-M3X0.5
Depth 3

- * 1) Air Ports are provided on two sides. Please select and use.
- * 2) Please use with a stroke of 3 mm or more.

【Mounting Method】

ARM-K-HP06-14-S



Mounting Bolt		Remarks	Tightening Torque
①	M5X12L (Nickel Plating)	Mounting Gripper ASSY	2.84 [N·m]
		Screw Depth 7 ~ 8	6.86 [N·m]
②	M5X14L (Nickel Plating)	※Screw Depth 10	6.86 [N·m]

reference)

Screw Depth 7	RS007N/L, RS013N/L etc
Screw Depth 8	RS003, RS005N/L etc
Screw Depth 10	duaro1/2 tec