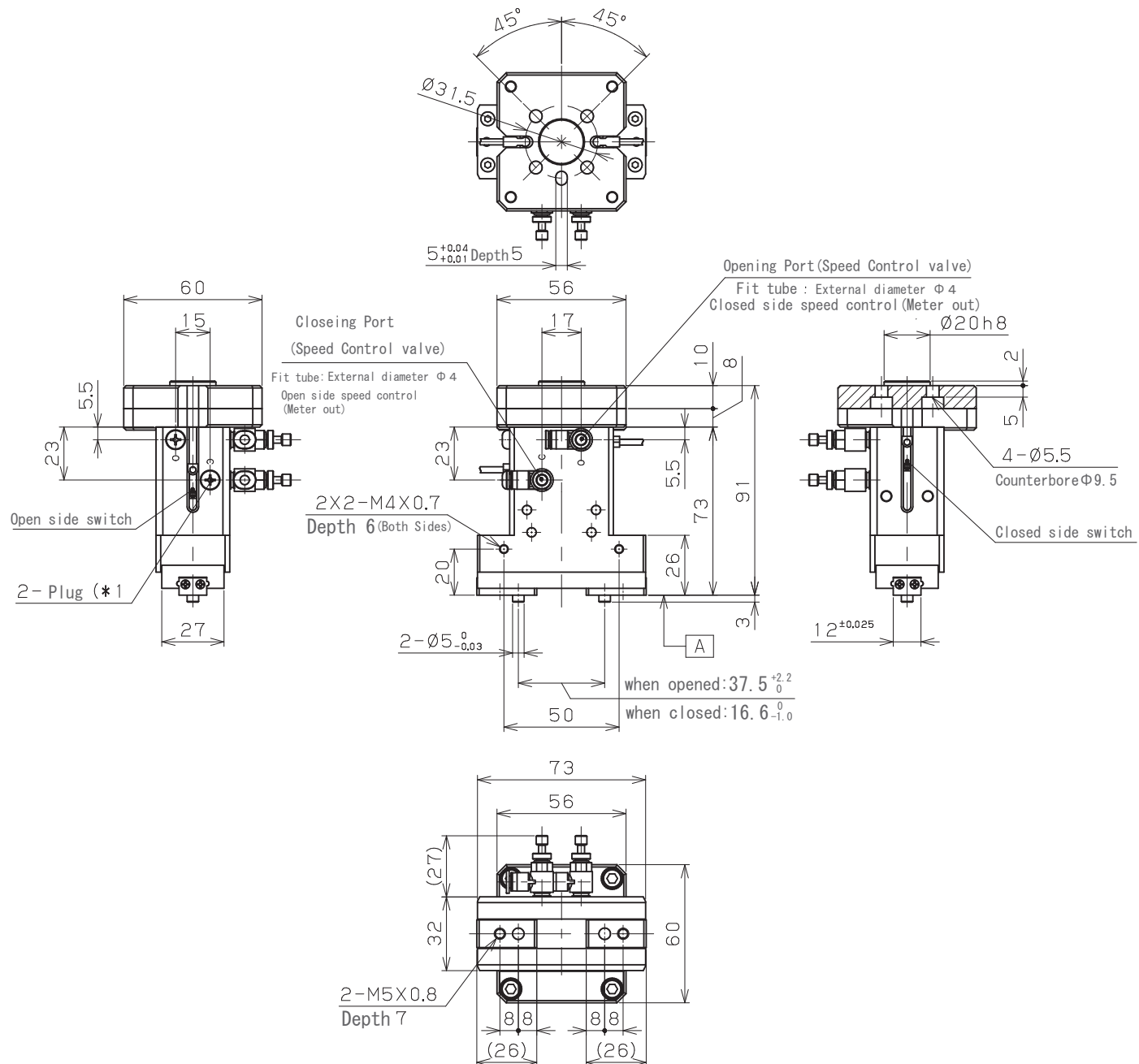


| Specifications        |  |
|-----------------------|--|
| model                 | ARM-K-HP04LR-20C   |
| Robot                 | RS-003N, RS-005N/L<br>RS-007N/L, duaro1/2                |
| Type                  | Air Gripper  |
| Fluid                 | Air  |
| Operating Pressure    | 0.1~0.7 MPa  |
| Proof Pressure        | 1.05 MPa   |
| Lubrication           | Not Required   |
| Operating Temperature | 0~60 °C (Not Freezing)                                   |
| Pipe Bore             | Tube Outer diameter $\Phi 4$<br>With speed control valve |
| Applicable Switch     | ZE Type  |
| Product Mass          | 0.64 kg  |

| Specifications           |   |
|--------------------------|---|
| model                    | HP04LR-20C                              |
| Bore Size                | $\Phi 20$                               |
| Action Type              | Double Action                           |
| Opening/Closing Stroke   | 22 mm (*2)                              |
| Effective Gripping Force | Open: 60 N (P=0.5<br>Close: 45 N L=30mm |
| Maximum grip point       | 130 mm (From faceA)<br>P= 0.5MPa        |
| Maximum Operating Cycle  | 120 c. p. m                             |
| Repeat Accuracy          | $\pm 0.01$ m m                          |

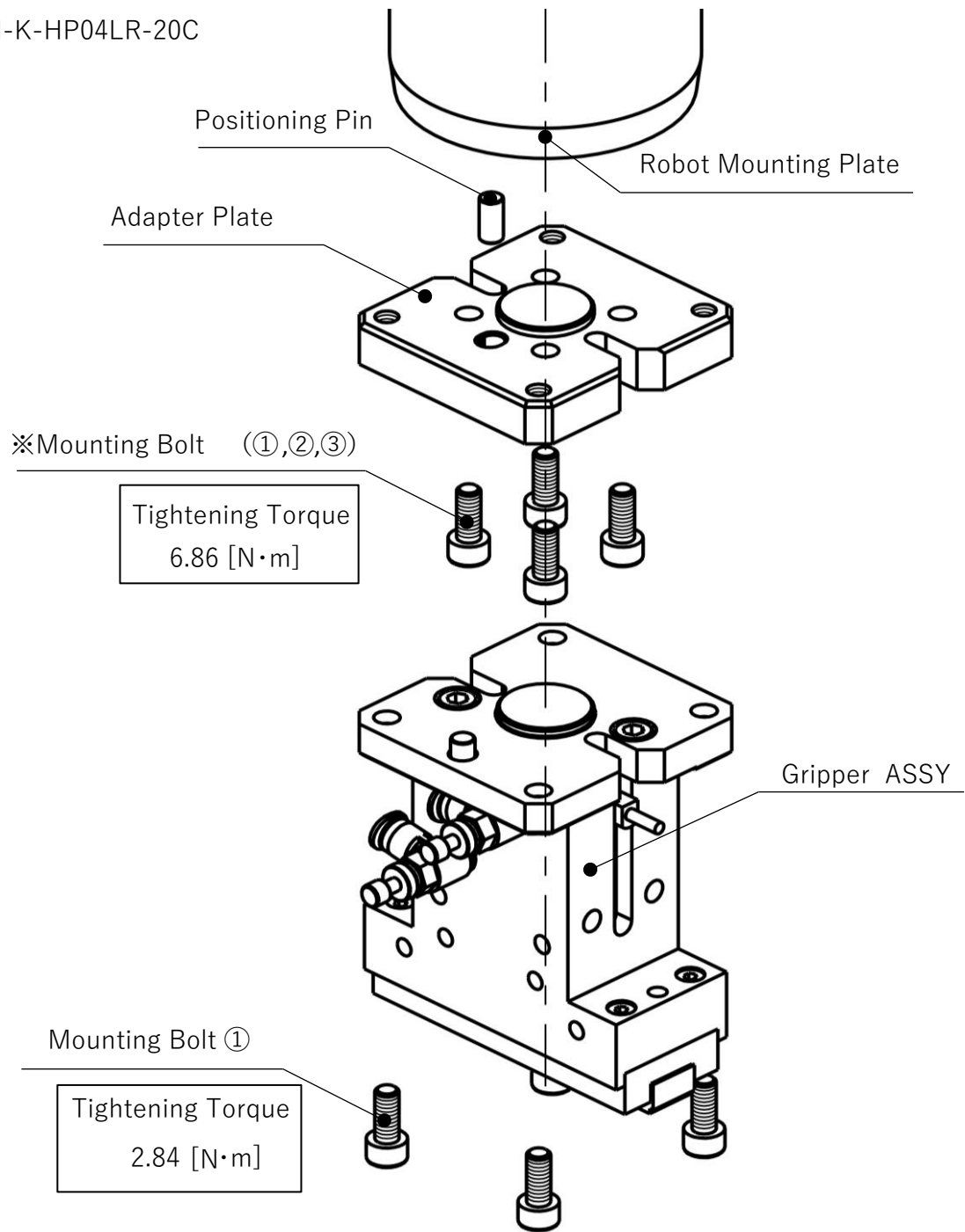
| Specifications              |                                     |
|-----------------------------|-------------------------------------|
| Type                        | ZE235B                              |
| Wiring Method               | 2wire System                        |
| Lead Wire Leading Direction | L-shaped                            |
| Load Voltage                | DC10~28 V                           |
| Load Current                | 4~20 mA (25°C )                     |
| Internal Drop Voltage       | 4.5V max                            |
| Leak Current                | 1 mA max<br>(DC24V•25°C )           |
| Operation Indicator         | Red LED indicator illuminates at ON |
| Lead Wire                   | PCCV0.15SQx2coresX3m                |



- \* 1) Air Ports are provided on two sides. Please select and use.
- \* 2) Please use with a stroke of 3 mm or more.

**【Mounting Method】**

ARM-K-HP04LR-20C



| Mounting Bolt |                          | Remarks               | Tightening Torque |
|---------------|--------------------------|-----------------------|-------------------|
| ①             | M5X12L (Nickel Plating)  | Mounting Gripper ASSY | 2.84 [N·m]        |
|               |                          | ※Screw Depth 8        | 6.86 [N·m]        |
| ②             | M5X10L (Black Chromate ) | ※Screw Depth 7        | 6.86 [N·m]        |
| ③             | M5X14L (Nickel Plating)  | ※Screw Depth 10       | 6.86 [N·m]        |

reference)

|                |                        |
|----------------|------------------------|
| Screw Depth 7  | RS007N/L, RS013N/L etc |
| Screw Depth 8  | RS003, RS005N/L etc    |
| Screw Depth 10 | duAro1/2 etc           |